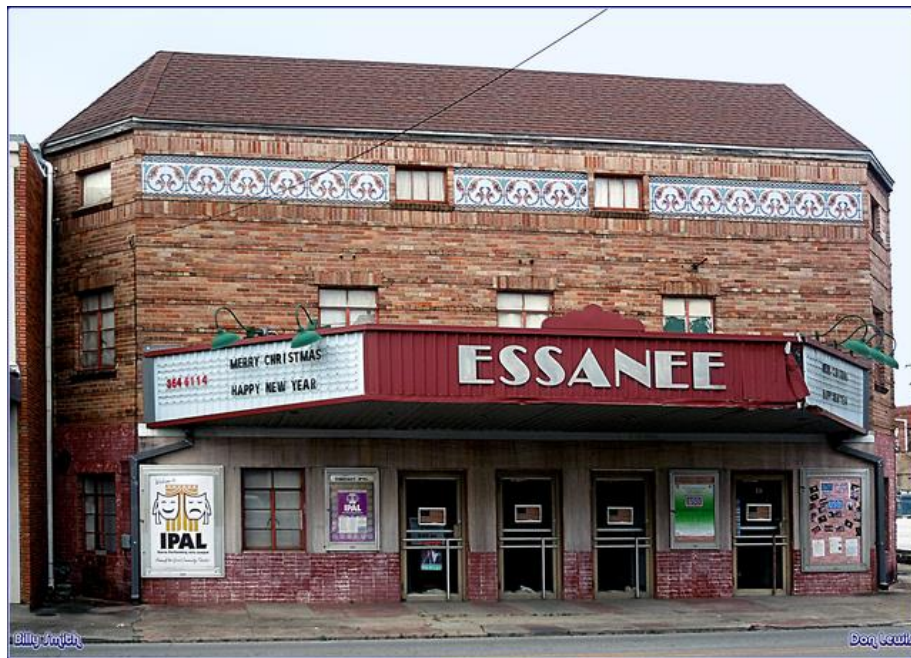


Investigation Summary Report

Essanee Theater New Iberia, La.



HISTORY

The Essanee Theater opened in November of 1937. It was designed by Owen Southwell. The Essanee Theater closed as a movie theater in 1980. This former movie theater is now used as a performing arts center.

EXPERIENCES

According to the employees, there are many noises and bangs in the theater. The lights get turned on and off.

Investigators witnessed knocks, bangs, dragging sounds. Rem Pod in the balcony and back hallway going off.

Investigators Reports

Location: Essanee Theater

Date: July 2, 2022

Investigators: Marci, Michele, Jonell

Equipment used: digital voice recorders, motion light up balls, rem pods, Boo Belle Rem Pod Trigger Object, K2, and cameras.

While doing the walkthrough we also took pictures. After the walkthrough we proceeded to investigate by breaking into groups.

Attached Files

EVP: Projector room dragging sound

Video: What appears to be a shadow figure popping up behind chairs and Rem Pods in upstairs hallway going off.

CONCLUSION

Louisiana Spirits has pioneered so many reportedly active locations in the state. By not simply going off of haunted tales, we treat any location as the next potential active location. In some cases, we walk out empty-handed, other times we don't.

In regards to this location, we believe that with the help of a follow-up investigation, we will be able to get more evidence!